



Certificate of Analysis

CANNABUSINESS LABORATORIES, LLC

Customer:

CKD 3933 LLC
3933 Plainfield Ave NE

Grand Rapids, MI 49525

Received Date **7/29/2024**

COA Released **7/31/2024**

Comments

Sample ID **240729007**

Order Number **CB240729004**

Sample Name **25mg D8 Gummies & Cmsic Drops**

External Sample ID

Batch Number

Product Type **Edible**

Sample Type **Edible**

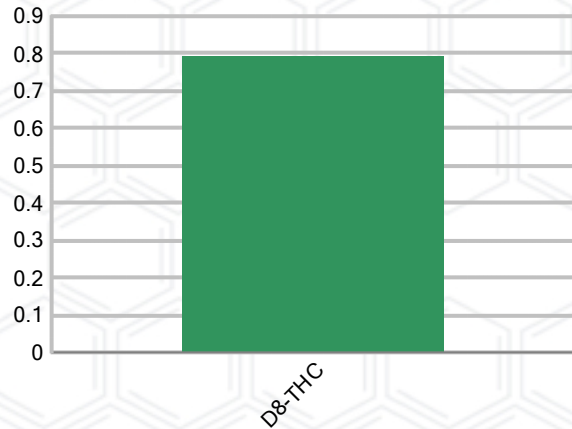
CANNABINOID PROFILE (Product Size = 3.5 g)

Analyte	LOQ (%)	% Weight	mg/g	mg/unit
CBC	0.01	ND	ND	ND
CBD	0.01	ND	ND	ND
CBDa	0.01	ND	ND	ND
CBDV	0.01	ND	ND	ND
CBG	0.01	ND	ND	ND
CBGa	0.01	ND	ND	ND
CBN	0.01	ND	ND	ND
d8-THC	0.01	0.794	7.939	27.79
d9-THC	0.01	ND	ND	ND
THCa	0.01	ND	ND	ND
Total Cannabinoids		0.794	7.939	27.79
Total Potential THC		N/A	N/A	ND
Total Potential CBD		N/A	N/A	ND
Total Potential CBG		N/A	N/A	ND
Ratio of Total Potential CBD to Total Potential THC				N/A
Ratio of Total Potential CBG to Total Potential THC				N/A

SAMPLE IMAGE



CANNABINOIDS % Weight



*Total Cannabinoids refers to the sum of all cannabinoids detected.

*Total Potential CBD = (0.877 x CBDa) + CBD. *Total Potential THC = (0.877 x THCa) + THC. *Total Potential CBG = (0.877 x CBGa) + CBG.

*Total Potential THC/CBD are calculated to take into account the loss of an acid group during decarboxylation.



J. Hobgood
Laboratory Manager

SIGNATURE

Jamie Hobgood

LABORATORY MANAGER

07/31/2024 8:50 AM

DATE

This product has been tested by CannaBusiness Laboratories using validated testing methodologies and a quality system. Values reported relate only to the product tested. CannaBusiness Laboratories makes no claims as to the efficacy, safety, or other risks associated with any detected or non-detected levels of any compounds reported herein. This Certificate shall not be reproduced except in full, without the written permission of CannaBusiness Laboratories. Photo is of sample received by the lab and may vary from final packaging. The results apply to the sample as received.



Certificate of Analysis

CANNABUSINESS LABORATORIES, LLC

Customer

CKD 3933 LLC
3933 Plainfield Ave NE
Grand Rapids, MI 49525



Sample Name: 25mg D8 Gummies & Comsic Drops
Sample ID: 240729007
Order Number: CB240729004
Product Type: Edible
Sample Type: Edible
Received Date: 07/29/2024
Batch Number:
COA released: 07/31/2024 8:50 AM

Potency (mg/g)			
Date Tested: 07/30/2024		Method: CB-SOP-028	
Instrument:			
0.000 %	0.000 %	0.794 %	7.939 mg/g
Total THC	Total CBD	Total Cannabinoids	Total Cannabinoids

Analyte	Result	Units	LOQ	Result	Units
CBC (Cannabichromene)	ND	%	0.010	ND	mg/g
CBD (Cannabidiol)	ND	%	0.010	ND	mg/g
CBDa (Cannabidiolic Acid)	ND	%	0.010	ND	mg/g
CBDV (Cannabidivarin)	ND	%	0.010	ND	mg/g
CBG (Cannabigerol)	ND	%	0.010	ND	mg/g
CBGa (Cannabigerolic Acid)	ND	%	0.010	ND	mg/g
CBN (Cannabinol)	ND	%	0.010	ND	mg/g
D8-THC (D8-Tetrahydrocannabinol)	0.794	%	0.010	7.939	mg/g
D9-THC (D9-Tetrahydrocannabinol)	ND	%	0.010	ND	mg/g
THCa (Tetrahydrocannabinolic Acid)	ND	%	0.010	ND	mg/g



J. Hobgood
Laboratory Manager

Jamie Hobgood

07/31/2024 8:50 AM

SIGNATURE

DATE

NT = Not tested, ND = Not detected; LOQ = Limit of Quantitation; <LOQ = Detected; >ULOL = Above upper limit of linearity; CFU/g = Colony forming units per 1 gram; TNTC = Too numerous to count

This product has been tested by CannaBusiness Laboratories using validated testing methodologies and a quality system. Values reported relate only to the product tested. CannaBusiness Laboratories makes no claims as to the efficacy, safety, or other risks associated with any detected or non-detected levels of any compounds reported herein. This Certificate shall not be reproduced except in full, without the written permission of CannaBusiness Laboratories. Photo is of sample received by the lab and may vary from final packaging. The results apply to the sample as received.